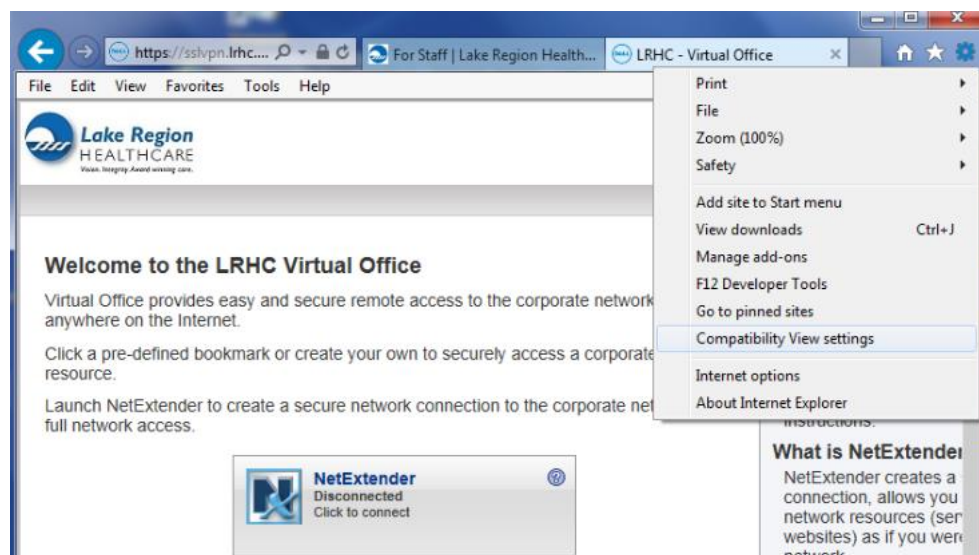


Follow the steps below when receiving this error

This Document was made for Internet explorer 11. Older versions do not require putting anything into compatibility view settings.

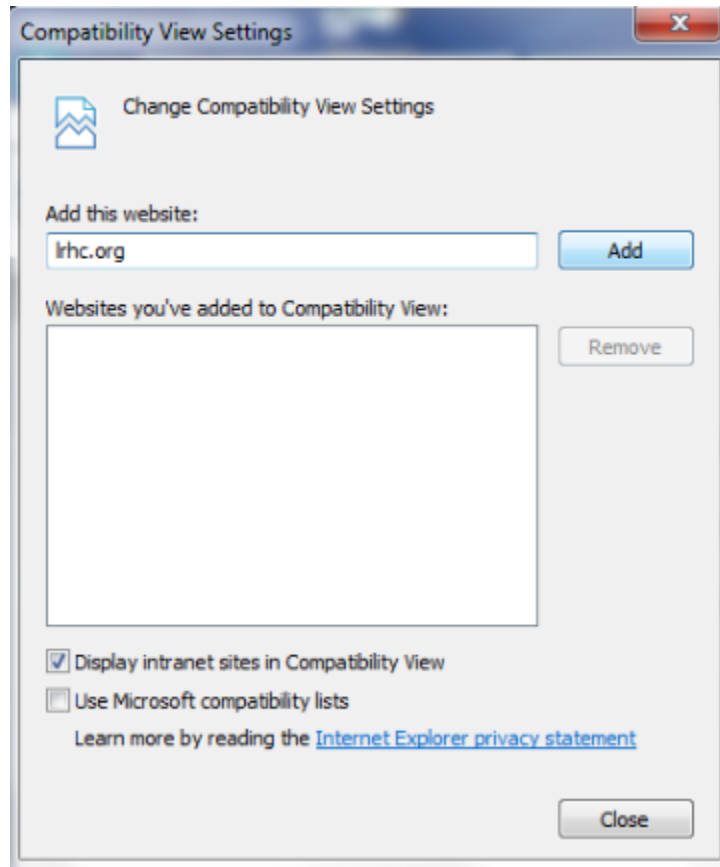


- Open up Internet Explorer and near the top right corner click the settings button (Looks Like a Gear) and select "Compatibility View Settings"



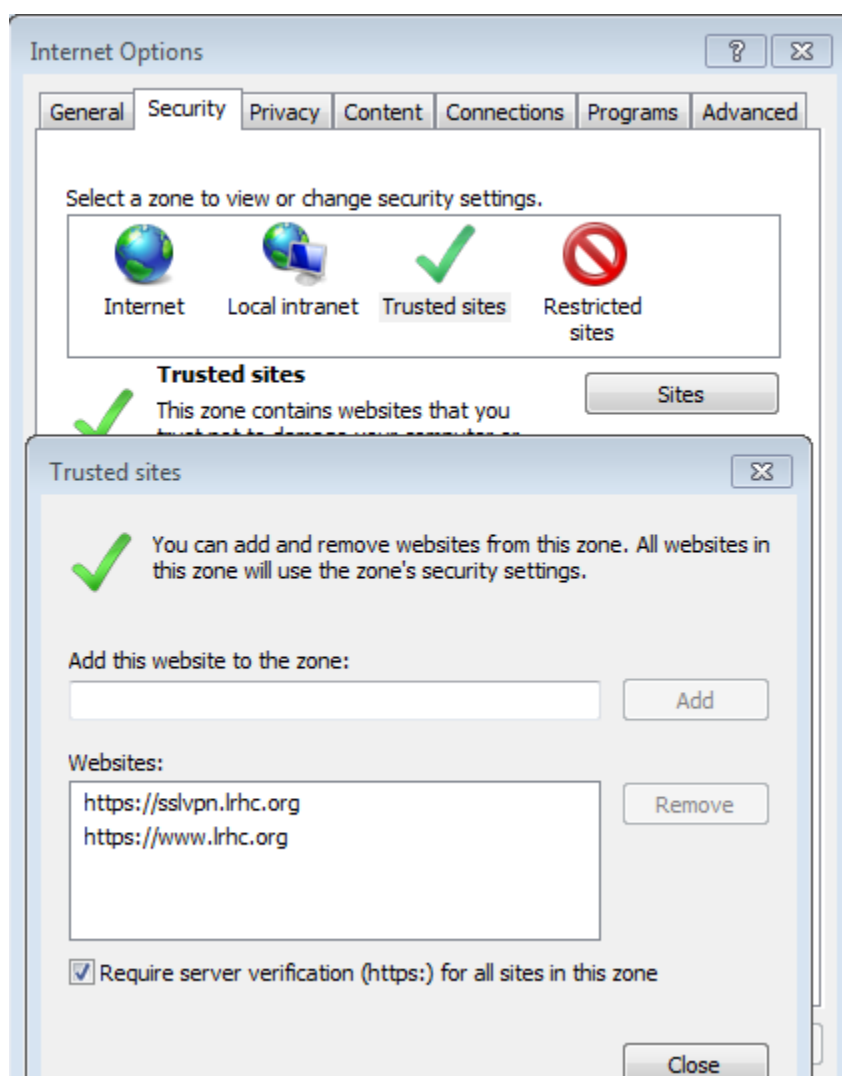
- In this window click in the “Add this website” box and type in lrhc.org and then click “Add” and then select close

(When you Have successfully added lrhc.org to Compatibility view, it will show it in the box labeled “Websites you’ve added to Compatibility View:”)



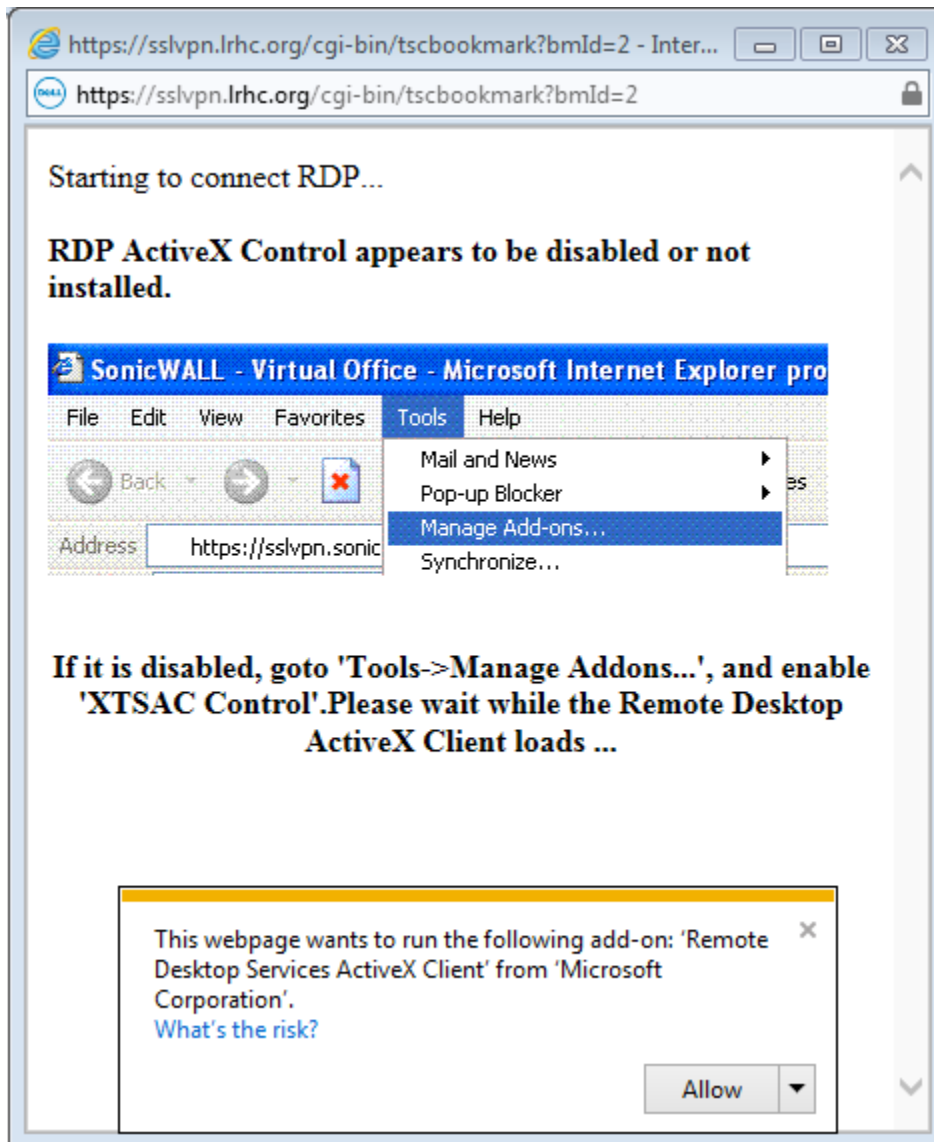
- Click close

- Go back to the settings button and open Internet Options
 - Select the “Security” tab
 - Click the “Trusted Sites” icon
 - Click “Sites”
 - Add these two sites
 - <https://sslvpn.lrhc.org>
 - <https://www.lrhc.org>

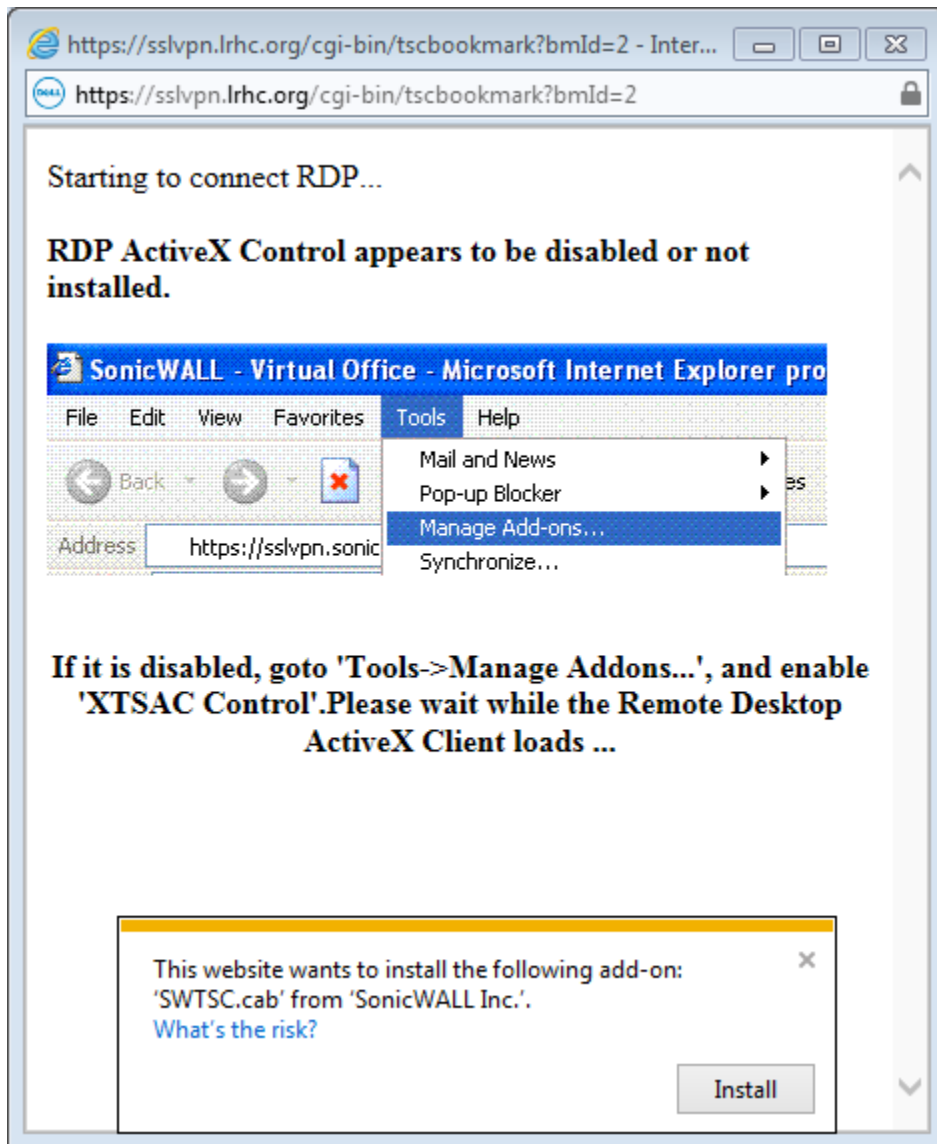


- Click Close and then click OK to exit out of Internet Options
- Close out of all internet explorer windows

- Go to the start menu > All Programs > Right Click on the internet Explorer icon and select “Run As Administrator”
- Log into Virtual office and select a connection
 - Watch For a bar appearing either at the top or bottom of the window (at the Bottom in this example) Click Allow



- Then a second bar should pop up, select “Install”



- A Security Warning window will then open, Click “Install”



- Restart the internet explorer browser
- Occasionally it will still not sign in on the first attempt, so give it more than one Attempt.